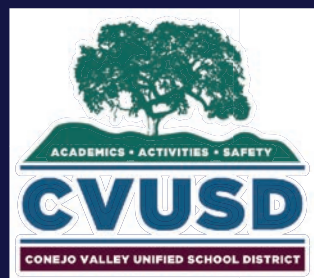




# CVUSD | *Facilities Master Plan*



CVUSD - NEWBURY PARK CLUSTER

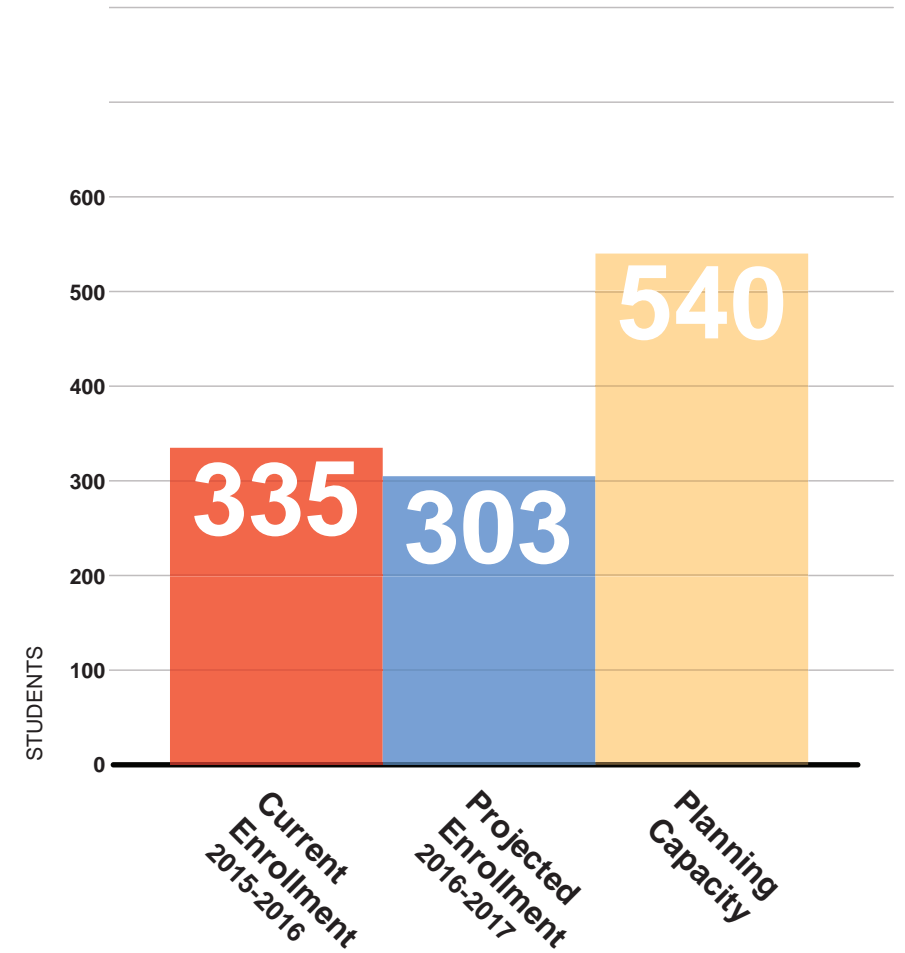
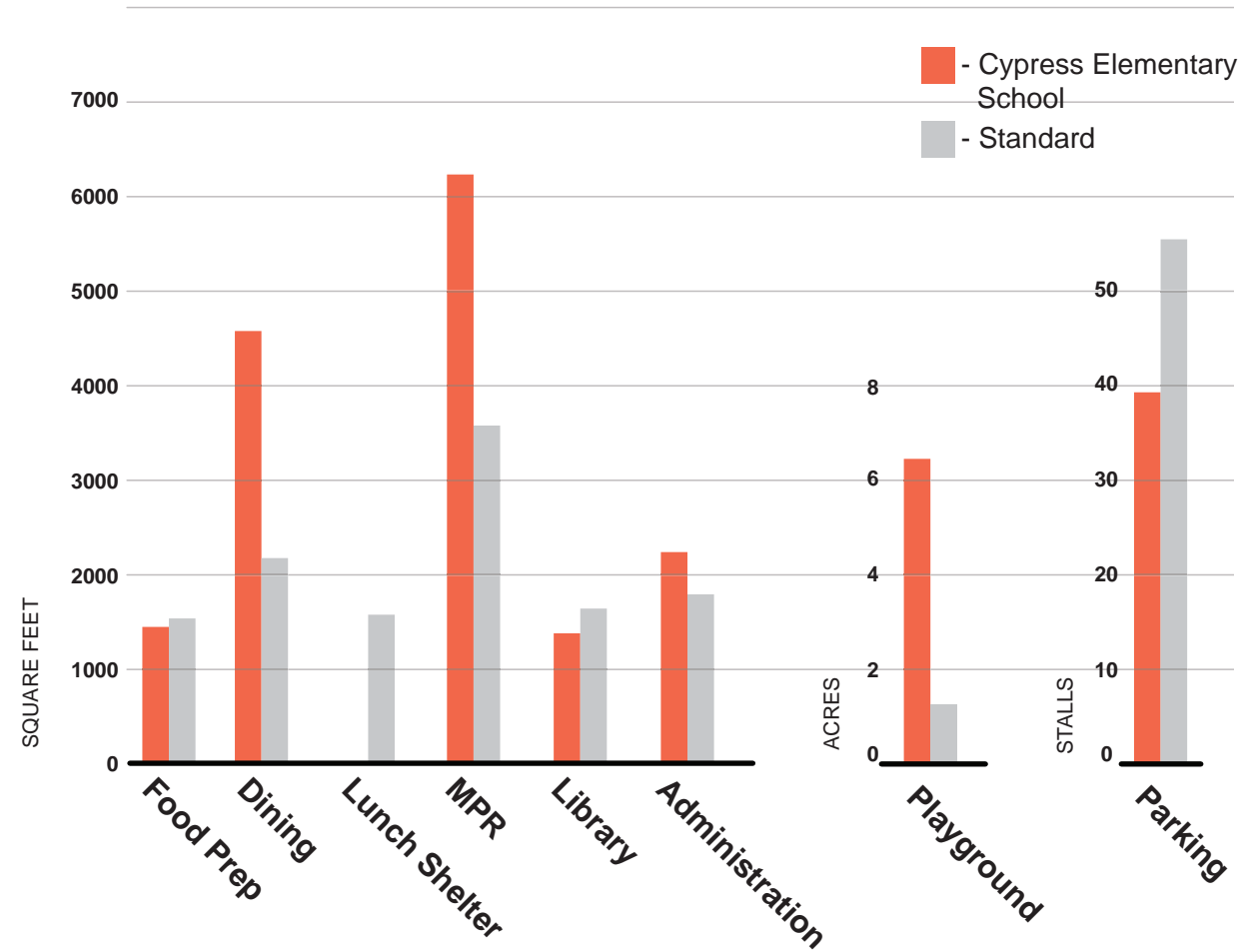


## Cypress Elementary | *Alternate Concepts*

4200 Kimber Drive | Newbury Park, CA 91320  
Conejo Valley Unified School District  
April 5, 2017

NAC Architecture  
837 North Spring Street, 3<sup>rd</sup> Floor  
Los Angeles, CA 90012  
Contact: 323.475.8075  
E-mail: lochoa@nacarchitecture.com  
Website: www.nacarchitecture.com





### Challenges Summary:

- Insufficient shade for play areas and outdoor dining
- Tight circulation space between the MPR building and adjacent structures
- Lack of storage space in classrooms
- Typical Accessibility challenges

### Core Facilities Summary

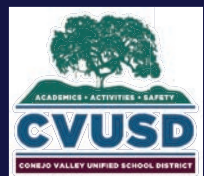
Current facilities meet school's needs

Current facilities DO NOT meet school's needs

- Dining (+2,436 SF)
- Multi-Purpose Room (+2,571 SF)
- Playground (+ 4.97 Acres)
- Administration (+440 SF)
- Library (-323 SF)
- Food Prep (-175 SF)
- Lunch Shelter (-1,620 SF)
- Parking (-16 Stalls)

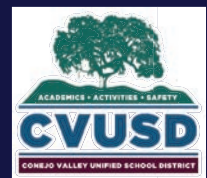
### Enrollment Summary

Total Current Classrooms: 18  
 Total Based on Projected Enrollment Classrooms: 15



# LEGEND

- Existing Building (No Work)
- New Construction
- High Modernization
- Medium Modernization
- Low Modernization
- Structure Above
- x Building Number
- "P" Indicates Portable
- x Indicates Uncertified



## Cypress Elementary | Alternate Concepts

4200 W Kimber Dr, Newbury Park, CA 91320  
 Conejo Valley Unified School District  
 April 5, 2017

# Existing Conditions

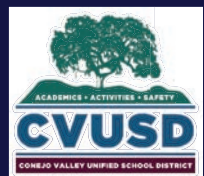
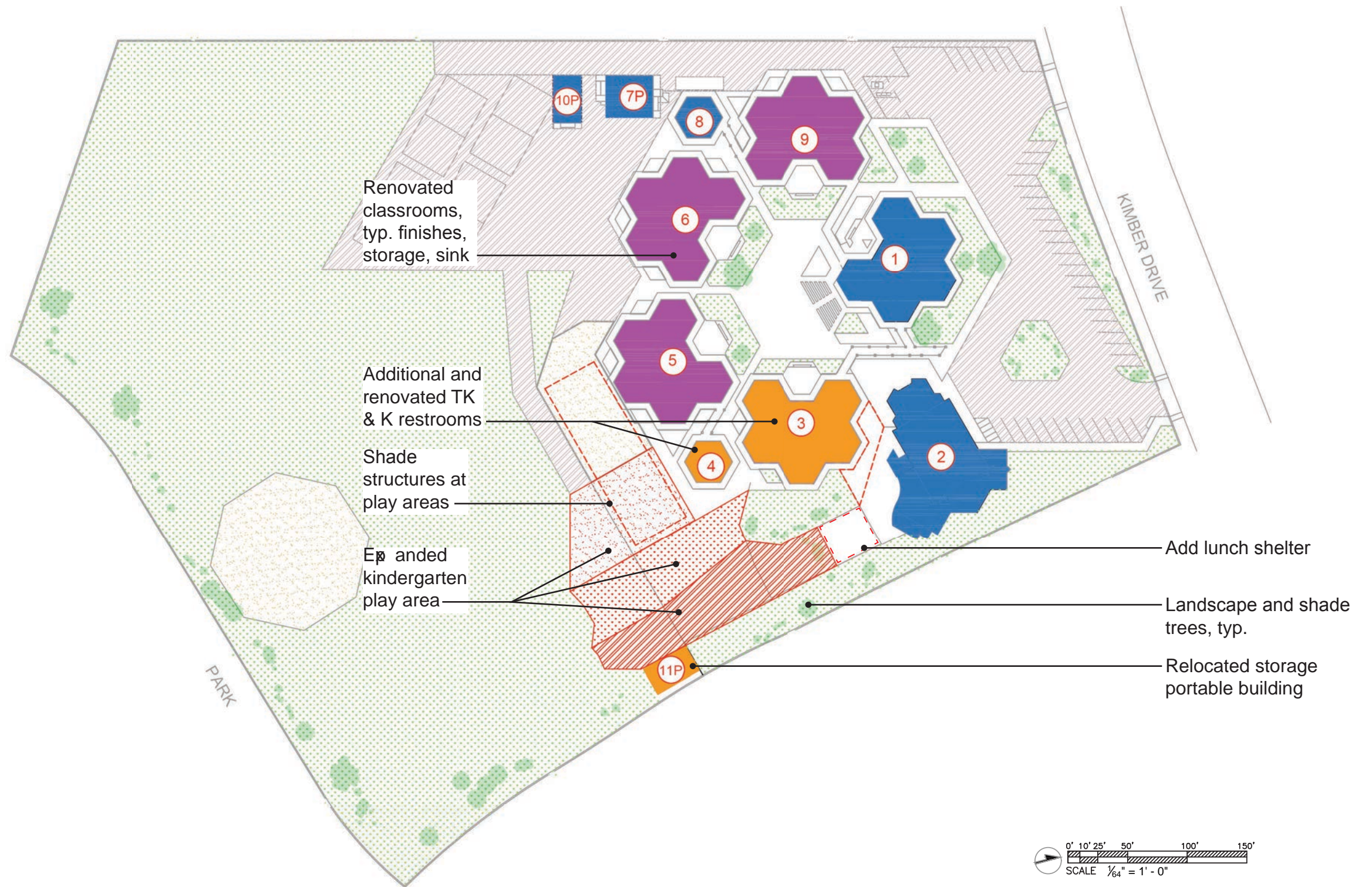


# LEGEND

- Existing Building (No Work)
- New Construction
- High Modernization
- Medium Modernization
- Low Modernization
- Structure Above
- x Building Number
- "P" Indicates Portable
- x Indicates Uncertified

## CAMPUS-WIDE IMPROVEMENTS

- Eliminate easily-accessible roof access points
- Storm drainage improvements
- Reconcile non-compliant accessibility conditions
- Hydration stations
- HVAC system repairs



## Cypress Elementary | Alternate Concepts

4200 W Kimber Dr, Newbury Park, CA 91320  
Conejo Valley Unified School District  
April 5, 2017

# Alternate Concept 1

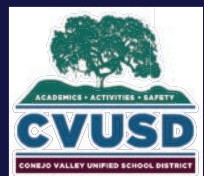
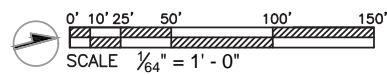
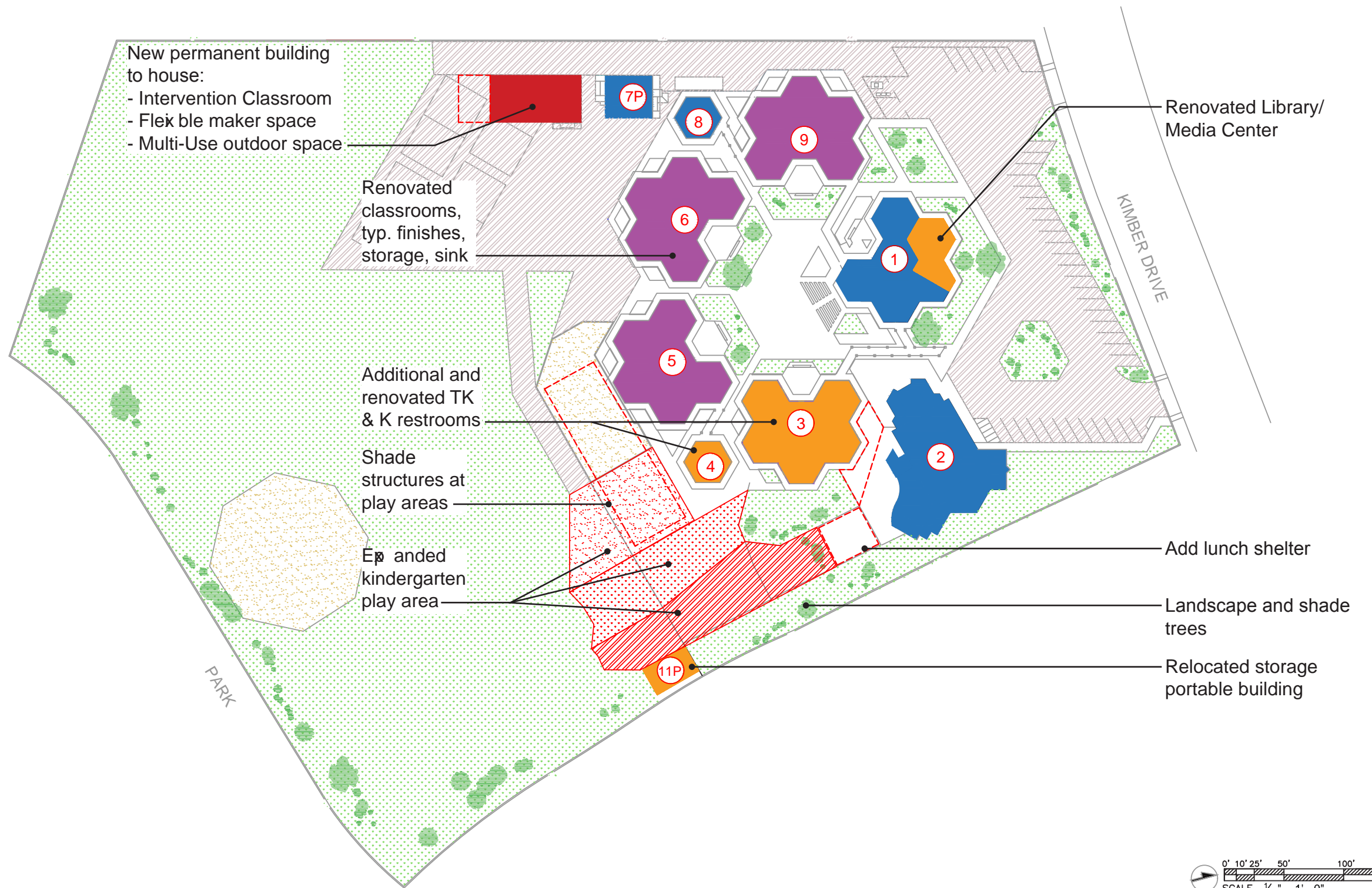


# LEGEND

- Existing Building (No Work)
- New Construction
- High Modernization
- Medium Modernization
- Low Modernization
- Structure Above
- x Building Number
- P Indicates Portable
- x Indicates Uncertified

## CAMPUS-WIDE IMPROVEMENTS

- Eliminate easily-accessible roof access points
- Storm drainage improvements
- Reconcile non-compliant accessibility conditions
- Hydration stations
- HVAC system repairs



## Cypress Elementary | Alternate Concepts

4200 W Kimber Dr, Newbury Park, CA 91320  
 Conejo Valley Unified School District  
 April 5, 2017

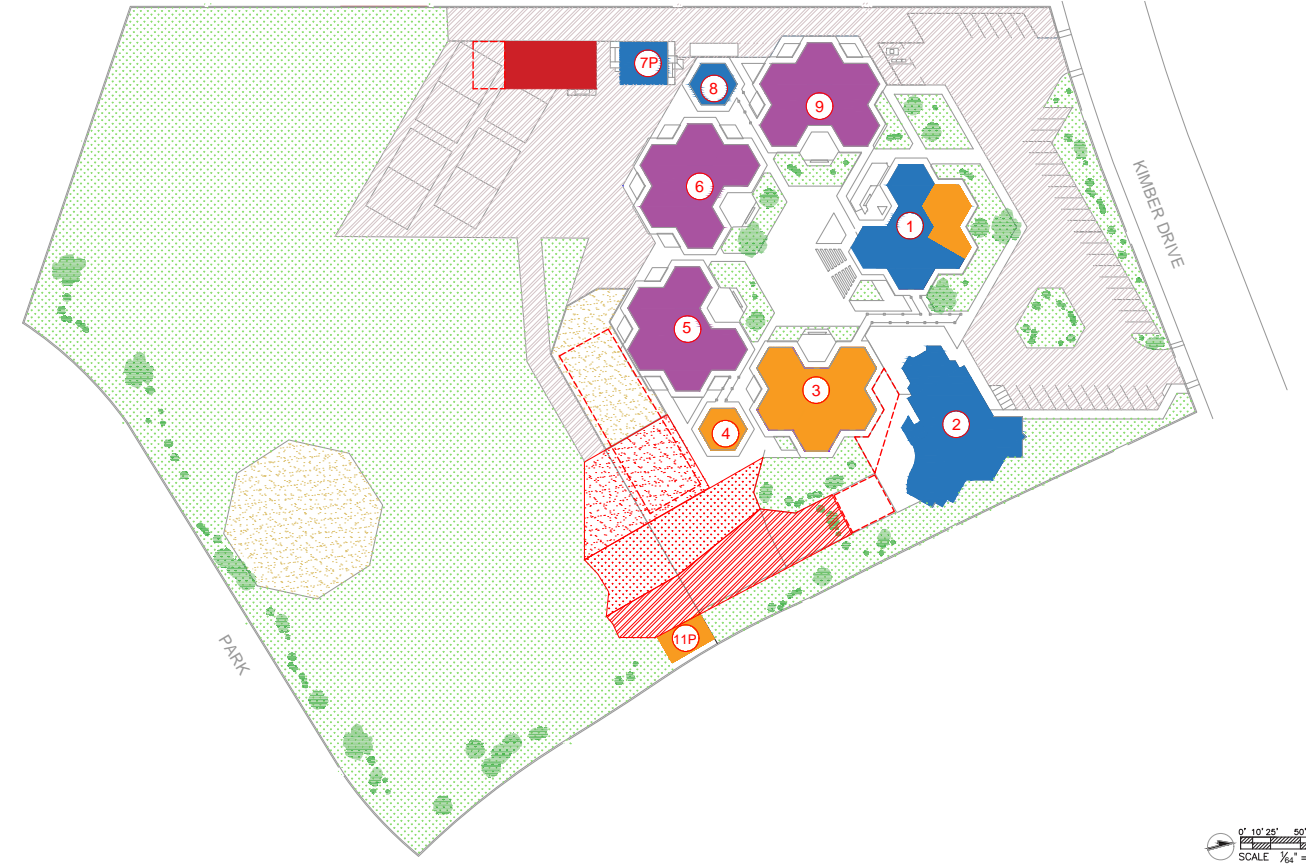
# Alternate Concept 2

# 4.0





Alternate Concept 1



Alternate Concept 2

**Project Scope:**

- Renovate classrooms to include finishes, storage and sinks
- Repair and repaint building exteriors and address HVAC system issues
- Additional/renovated restrooms for TK and K students
- Expand kindergarten play area, provide shade structures at all play equipment, and add hydration stations
- Site improvements to provide shade for play and dining, correct storm drainage issues and eliminate easily-accessible roof access points

**Project Scope:**

- Renovate classrooms to include finishes, storage and sinks
- Repair and repaint building exteriors and address HVAC system issues
- Additional/renovated restrooms for TK and K students
- Expand kindergarten play area, provide shade structures at all play equipment, and add hydration stations
- Site improvements to provide shade for play and dining, correct storm drainage issues and eliminate easily-accessible roof access points
- New permanent building to house intervention classroom, flexible maker space and multi-use outdoor space