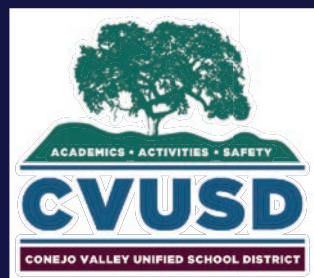




# CVUSD *Facilities Master Plan*



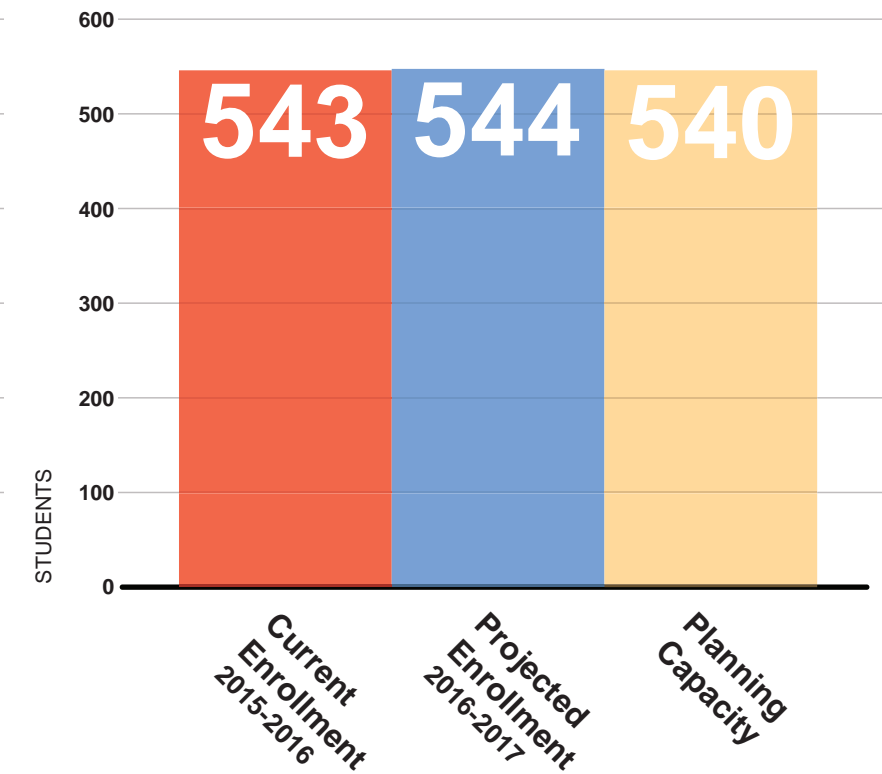
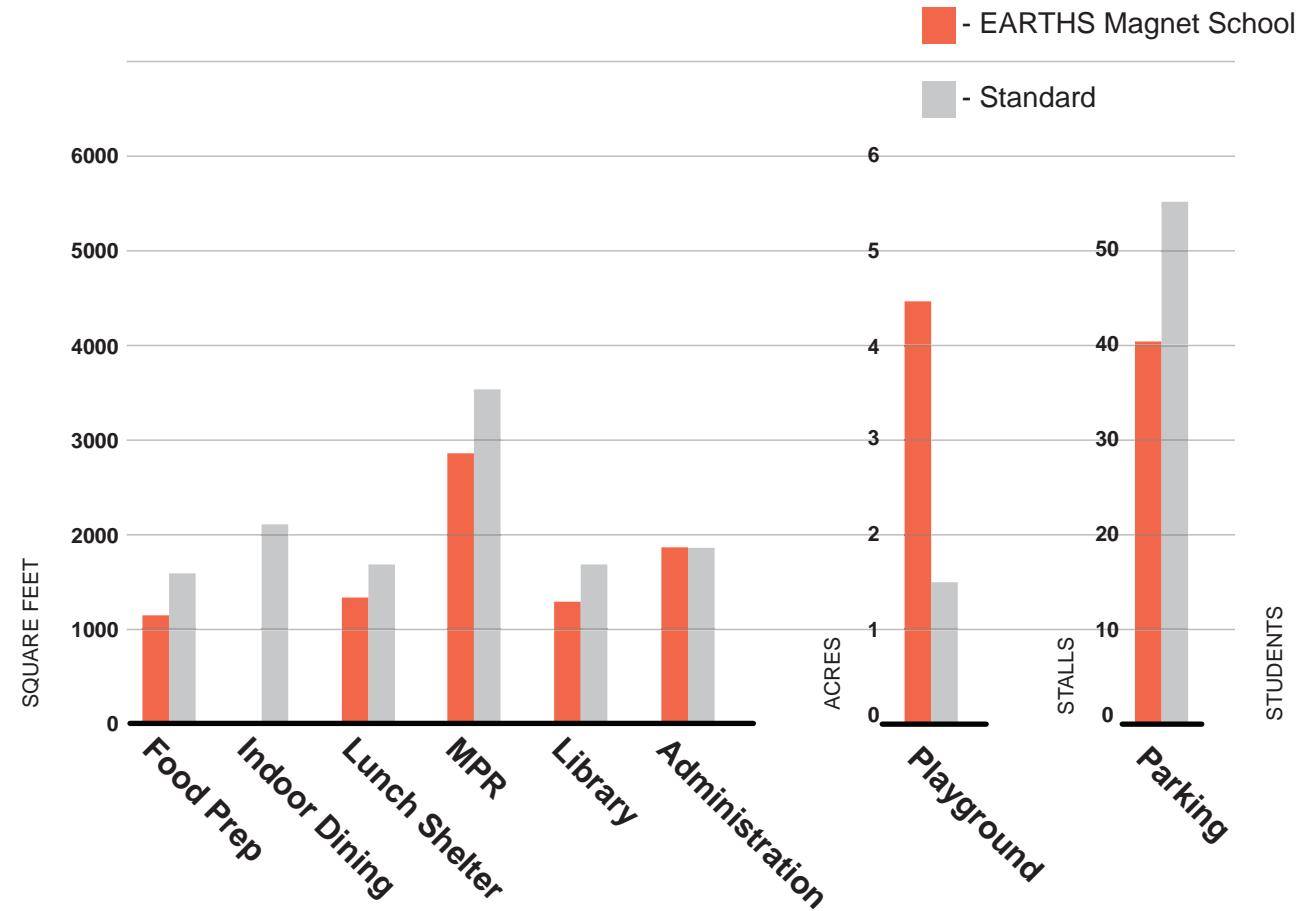
CVUSD - NEWBURY PARK CLUSTER



## Earth Magnet School | *Alternate Concepts*

2626 Michael Dr, Newbury Park, CA 91320  
Conejo Valley Unified School District  
April 5, 2017

NAC Architecture  
837 North Spring Street, 3<sup>rd</sup> Floor  
Los Angeles, CA 90012  
Contact: 323.475.8075  
E-mail: lochoa@nacarchitecture.com  
Website: www.nacarchitecture.com



### Challenges Summary:

- Covered connection between most buildings but not all
- Insufficient shade for play areas and outdoor dining
- Congestion during drop-off and pick-up times
- Quantity of parking stalls is inadequate for staff and visitors
- Size of Multi-purpose Room
- Typical Accessibility challenges

### Core Facilities Summary

Current facilities meet school's needs

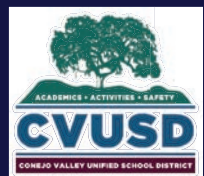
- Administration (+4 SF)
- Playground (+2.9 Acres)
- Library (-365 SF)
- Food Prep (-426 SF)
- Indoor Dining (-2160 SF)

Current facilities DO NOT meet school's needs

- Multi-Purpose Room (-779 SF)
- Lunch Shelter (-300 SF)
- Parking (-14 Stalls)

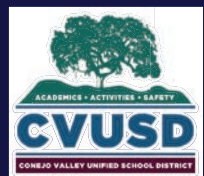
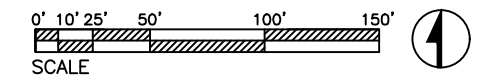
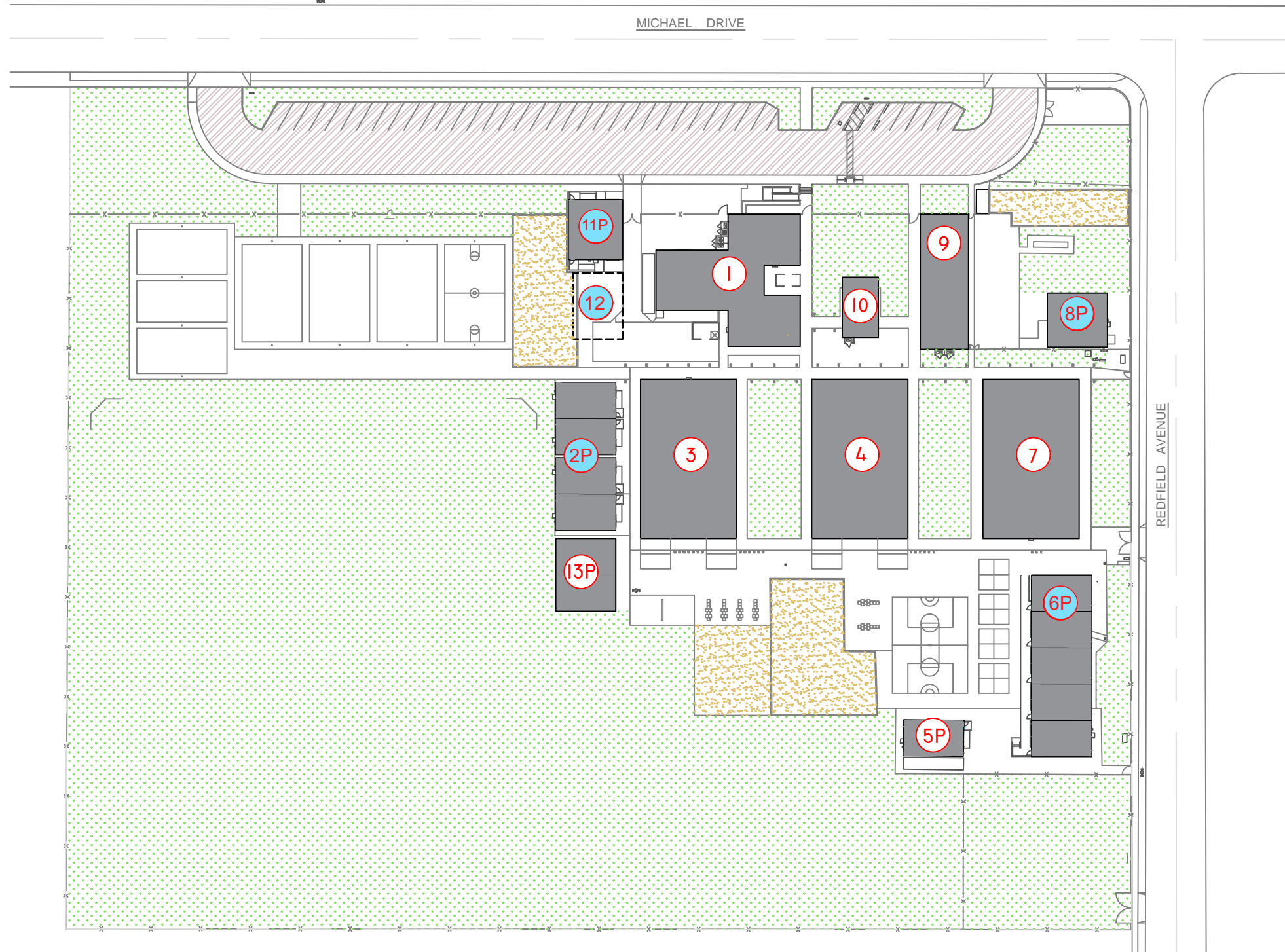
### Enrollment Summary

Total Current Classrooms: 28  
 Total Based on Projected Enrollment Classrooms: 28



# LEGEND

- Existing Building (No Work)
- New Construction
- High Modernization
- Medium Modernization
- Low Modernization
- Structure Above
- x Building Number
- "P" Indicates Portable
- x Indicates Uncertified



## EARTHS Magnet School | *Alternate Concepts*

2626 Michael Dr, Newbury Park, CA 91320  
 Conejo Valley Unified School District  
 April 5, 2017

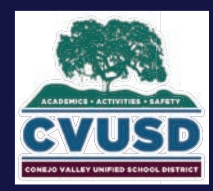
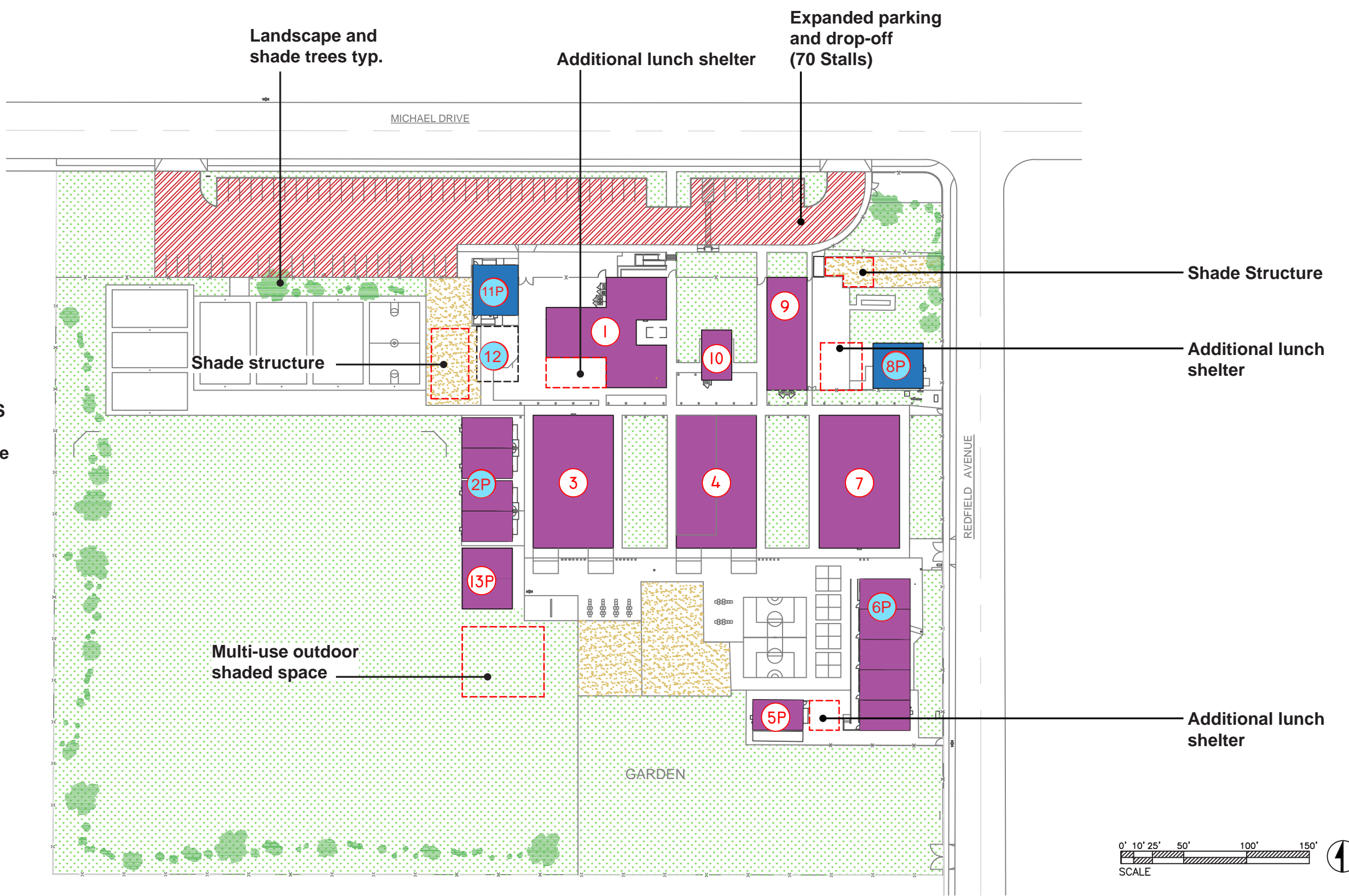
# Existing Conditions

**LEGEND**

- Existing Building (No Work)
- New Construction
- High Modernization
- Medium Modernization
- Low Modernization
- Structure Above
- x Building Number
- P Indicates Portable
- x Indicates Uncertified

**CAMPUS-WIDE IMPROVEMENTS**

- Improve electrical infrastructure
- Repair/ replace main water line
- Exterior lighting
- Reconcile non-compliant accessibility conditions

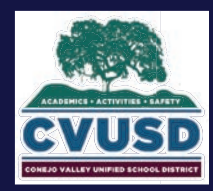
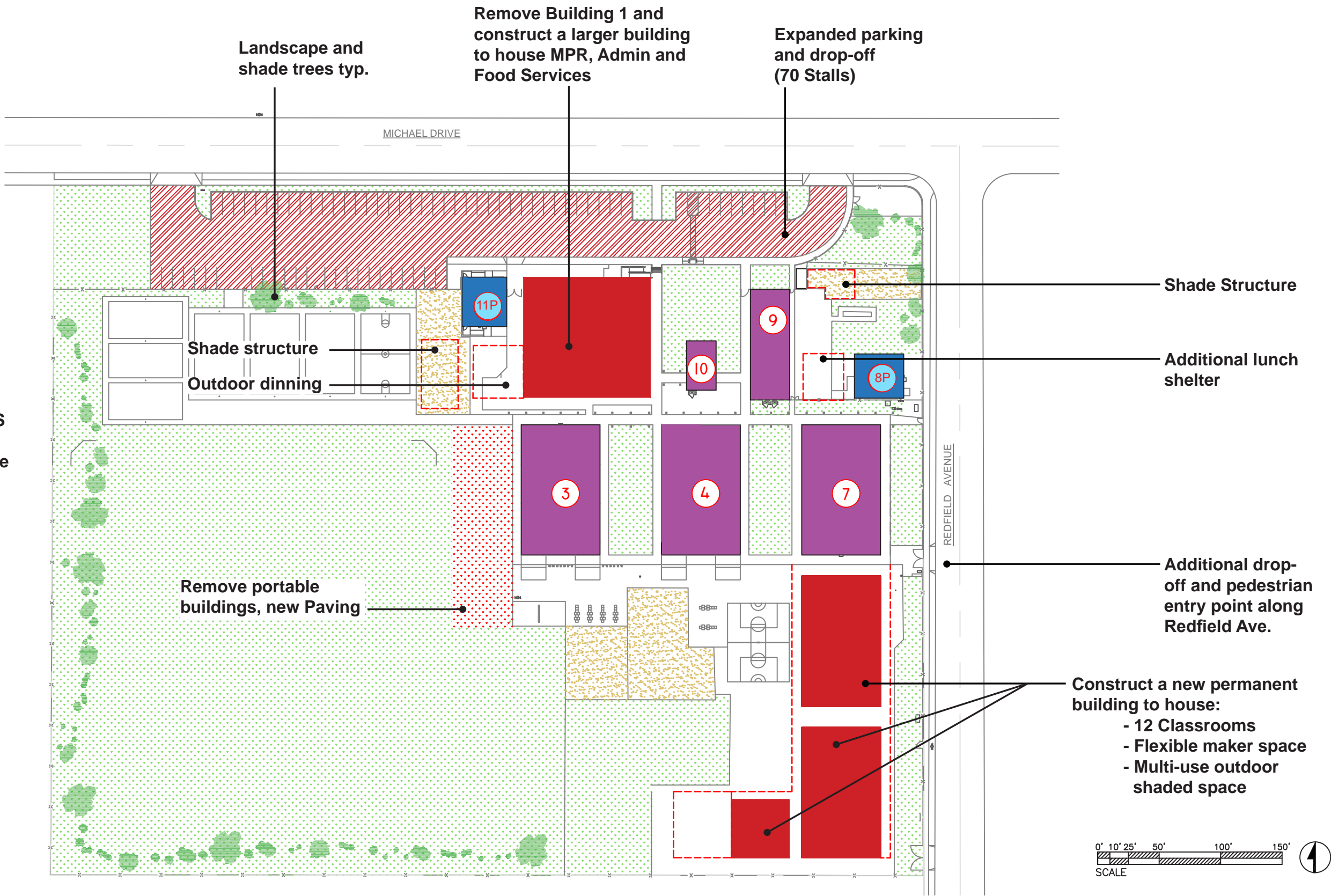


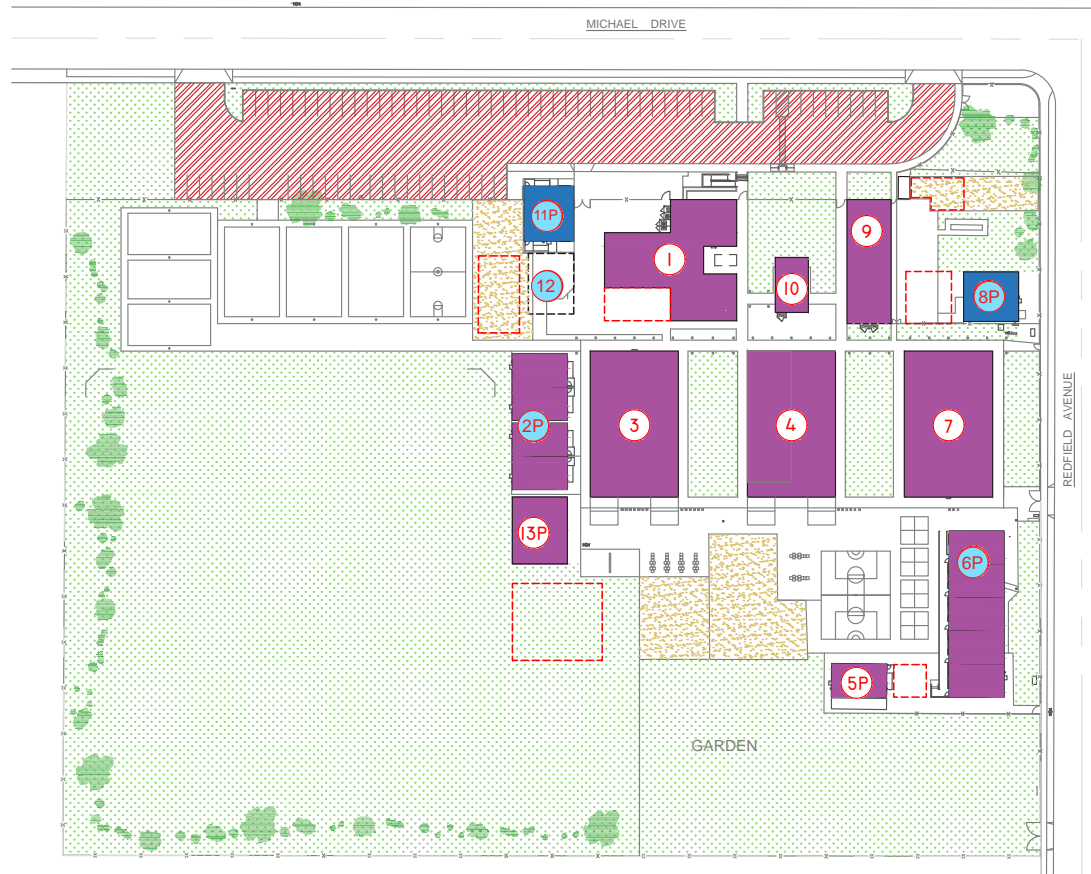
**LEGEND**

- Existing Building (No Work)
- New Construction
- High Modernization
- Medium Modernization
- Low Modernization
- Structure Above
- x Building Number
- P Indicates Portable
- x Indicates Uncertified

**CAMPUS-WIDE IMPROVEMENTS**

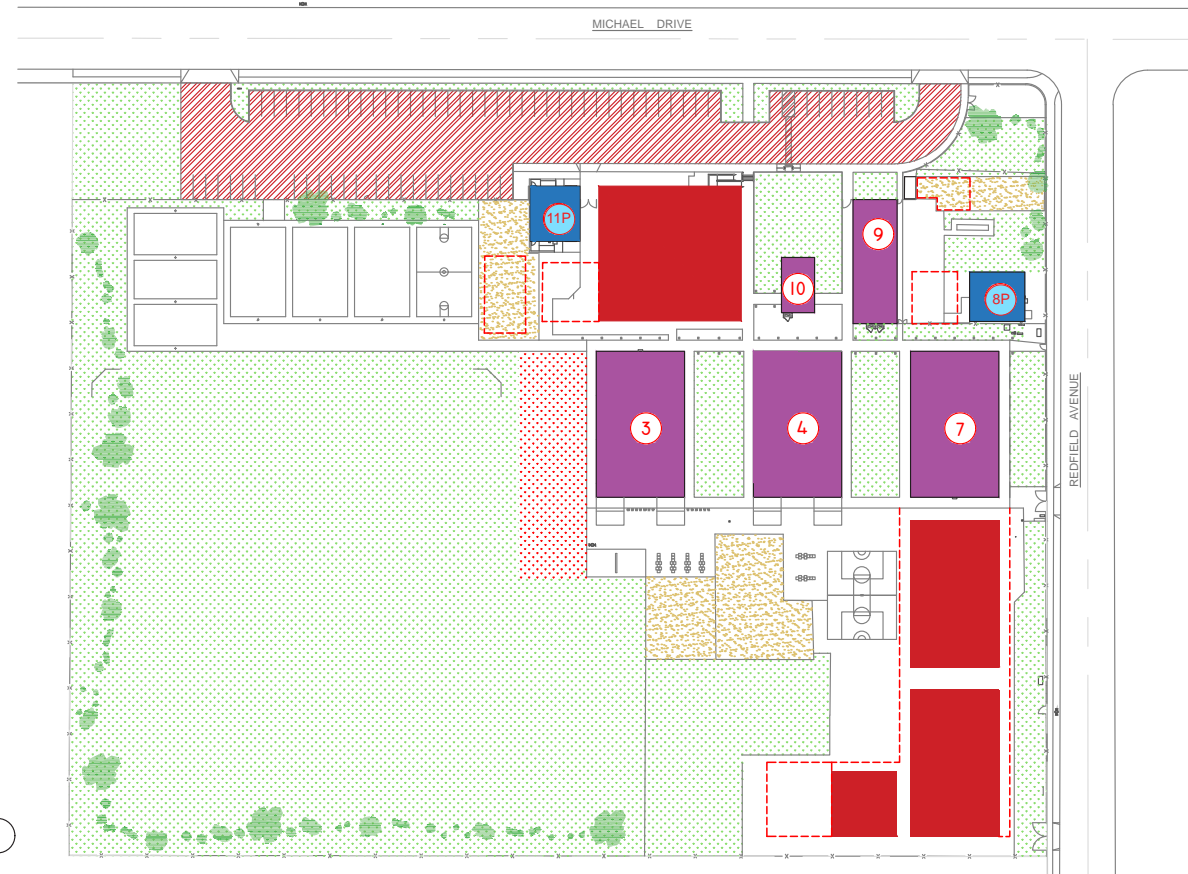
- Improve electrical infrastructure
- Repair/ replace main water line
- Exterior lighting
- Reconcile non-compliant accessibility conditions





0' 10' 25' 50' 100' 150'  
SCALE

**Alternate Concept 1**



0' 10' 25' 50' 100' 150'  
SCALE

**Alternate Concept 2**

**Project Scope:**

- Expanded Parking and Drop-Off
- Shade structures at play equipment
- Landscape and shade trees
- Additional lunch shelter
- Multi-Use Outdoor Shaded Space
- Expand covered walkway system
- Repair/replace main water line
- Exterior lighting
- Improve electrical infrastructure
- Reconcile non-compliant accessibility conditions

**Project Scope:**

- Expanded Parking and Drop-Off
- Shade structures at play equipment
- Landscape and shade trees
- Additional lunch shelter
- Expand covered walkway system
- Repair/replace main water line
- Exterior lighting
- Improve electrical infrastructure
- Reconcile non-compliant accessibility conditions
- Add drop-off pedestrian entry point along Redfield Avenue
- Remove Building 1 and construct a larger building to house MPR, Admin and Food Services
- Remove portable buildings (2, 13, 5, 6)
- New permanent building to house 12 classrooms, flexible maker space, and multi-use outdoor shaded space

